



Stübbe[®]
Partner for Solutions



Ball check valve KRV400

Features | Pictogram | Technical details



› data sheet no.: 300355 - 2016/01/12

All rights for technical modifications withheld

ASV Stübbe GmbH & Co. KG · Hollwieser Str. 5 · D-32602 Vlotho · Tel. +49(0)5733. 799-0 · Fax +49(0)5733. 799-5000 · contact@asv-stuebbe.de · www.asv-stuebbe.de

Features



Ball check valve KRV400

- hermetically sealed at low working pressures
- minimum back pressure for drop tight service
0,2bar (valve in horizontal position)
- corrosion resistant
- maintenance-free
- article of trade



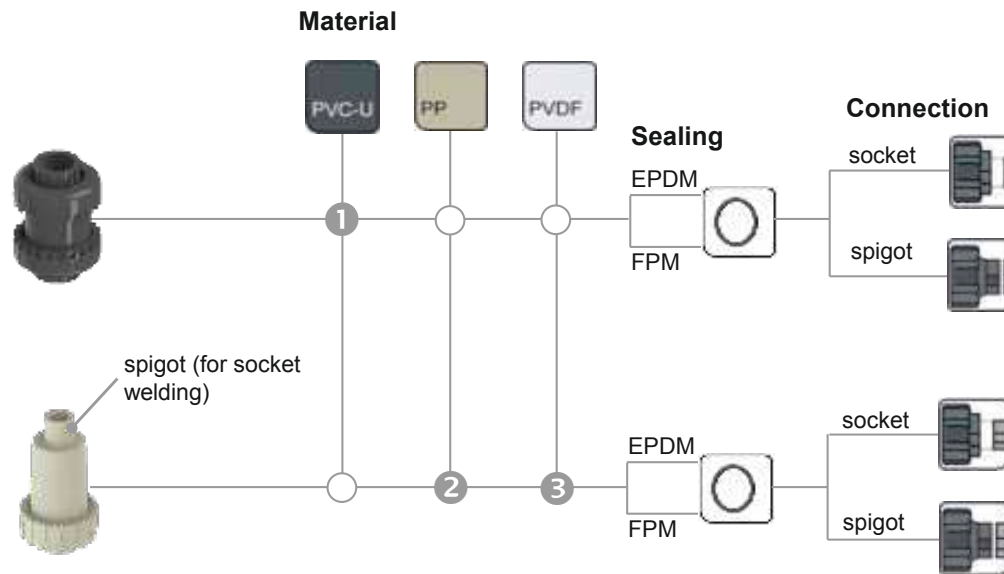
Pictogram

Nominal Pressure (H₂O, 20°C)

PVC-U = PN16

PP = PN10

PVDF = PN16



Connection material (pipe connection)

- 1 PVC-U: socket **DIN***
socket **ANSI, BS, JIS**
female thread Rp*
PE100 spigot
- 2 PP socket **DIN**
female thread Rp
PP socket
- 3 PVDF socket **DIN**
PVDF spigot

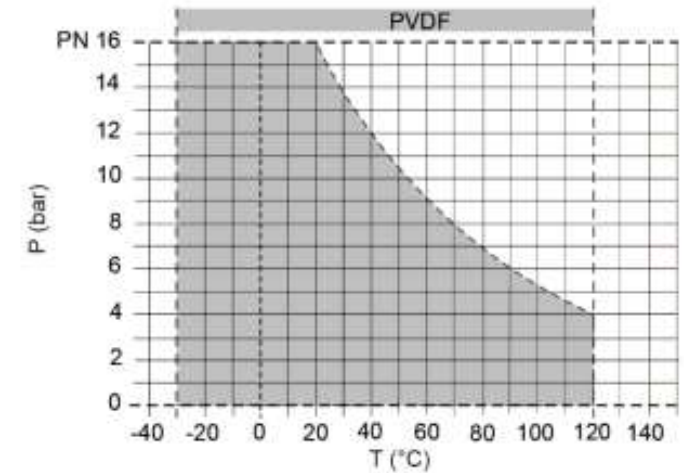
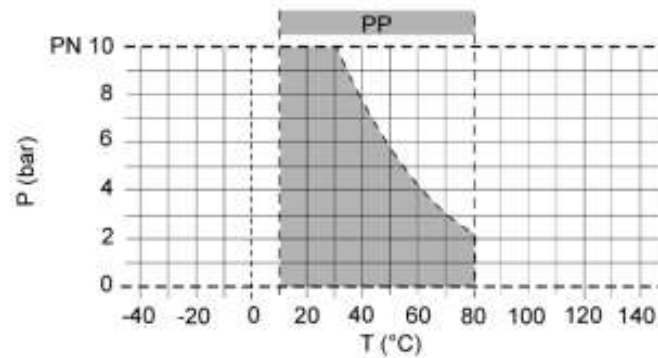
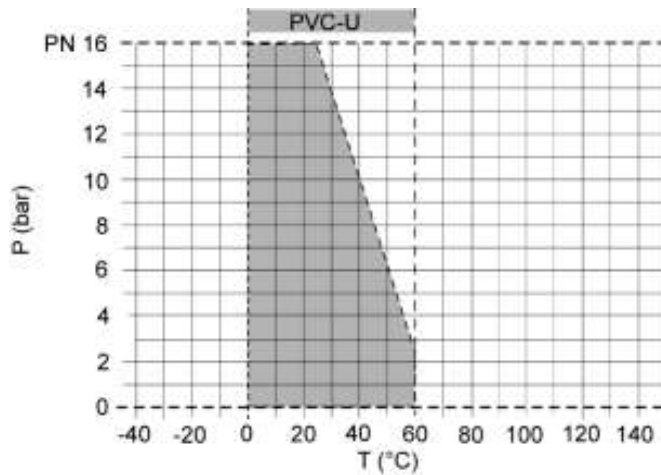
* incl. DN 10.

Nominal size:

DN 8	DN 10	DN 15	DN 20	DN 25	DN 32	DN 40	DN 50	DN 65	DN 80	DN 100	DN 125	DN 150	DN 200	DN 250	DN 300	DN 350	DN 400
------	-------	-------	-------	-------	-------	-------	-------	-------	-------	--------	--------	--------	--------	--------	--------	--------	--------

● available
○ not available

Technical details



Kv100 * [l/min]	DN15	DN20	DN25	DN32	DN40	DN50	For fluids with a specific weight of maximum:
PVC-U	152	258	433	643	928	1343	1,37 g/cm³
PP	110	205	240	410	650	840	1,20 g/cm³
PVDF	110	205	240	410	650	840	1,78 g/cm³

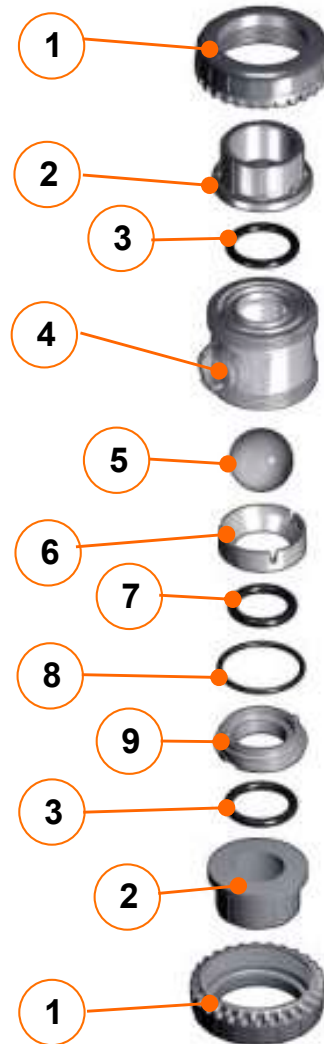
*Kv100 = flow rate H₂O, 20°C, pressure difference 1bar, valve 100% open

Technical details



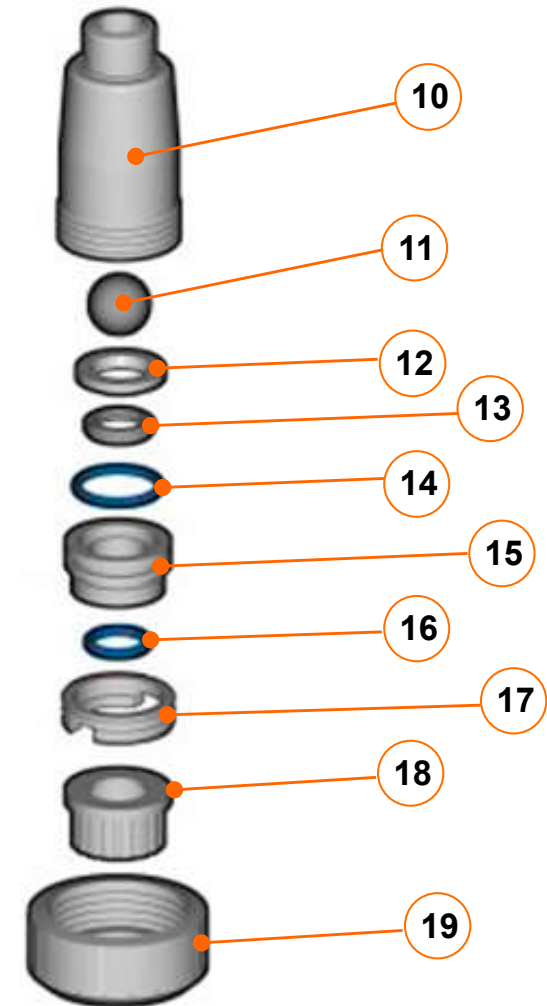
Components PVC-U

- 1 Union nut
- 2 End connector
- 3 O-ring
- 4 Body
- 5 Ball
- 6 Packing presser ring
- 7 O-ring
- 8 O-ring
- 9 Radial seal



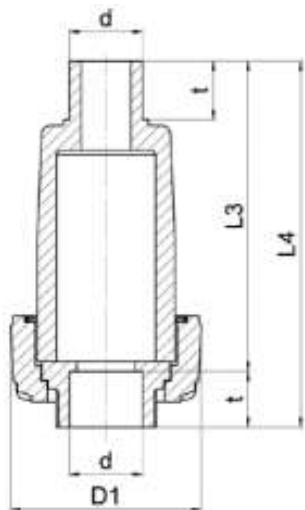
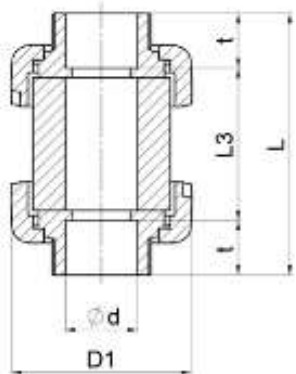
Components PP / PVDF

- 10 Body
- 11 Ball
- 12 Packing presser ring
- 13 Radial seal
- 14 O-ring
- 15 Support
- 16 O-ring
- 17 Thread ring
- 18 End Connector
- 19 Union nut



* = spare part

Technical details



d		16	20	25	32	40	50	63
DN (mm)		10	15	20	25	32	40	50
D1	PVC-U	54	54	63	72	85	100	118
	PP	-	55	66	74	86	99	12
	PVDF	-	55	66	74	86	99	12
L	PVC-U	82	82	91	103	120	139	174
L3	PVC-U	54	50	53	59	68	77	98
	PP	-	89	107	126	146	158	186
	PVDF	-	89	107	126	146	158	186
L4	PP	-	105	126	150	173	188	222
	PVDF	-	105	126	150	173	188	222
t	PVC-U	14	16	19	22	26	31	38
	PP	-	16	19	22	26	31	38
	PVDF	-	16	19	22	26	31	38